



DK-A60-Q

DKA60-Q HAMMER

- ✓ ***QL-60 SHANK DESIGN***
- ✓ ***NEW GENERATION***
- ✓ ***SUPERIOR TECHNOLOGY***
- ✓ ***STANDARD BIT DIAMETERS, 5.875"-6.750"***
- ✓ ***DELIVERS MORE ENERGY PER BLOW***
- ✓ ***HARDENED PISTON FOR EXTENDED LIFE***
- ✓ ***INNOVATIVE DESIGN FOR MAXIMUM PERFORMANCE WITH MINIMUM MAINTENANCE***

DRILL KING INTERNATIONAL

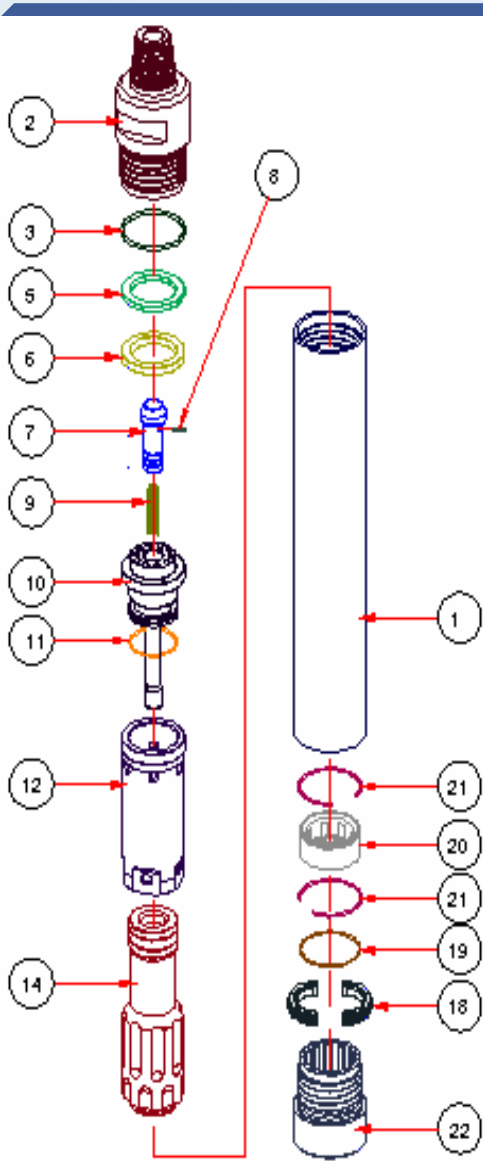
820 Sixth Avenue ♦ Mansfield, TX 76063 ♦ USA

Main#: 817-539-2500 ♦ Fax#: 682-222-1050

Sales#: 817-539-2501 ♦ Toll Free#: 866-900-2487

sales@drillking.net ♦ www.drillking.net

The newest generation of Drill King Hammers means faster penetration, longer life, and less down time due to down hole failures.



No.	NOMENCLATURE	Qty	Part Number
HAMMER ASSEMBLY (QL-6)			HADK-A60Q
1	WEAR SLEEVE	1	HPDK-A6001
2	TOP SUB	1	HPDK-A6002-Q
3	TOP SUB O-RING	1	HPDK-A6003
5	SPRING WASHER	1	HPDK-A6005
6	MAKE UP RING	1	HPDK-A6006
7	CHECK VALVE	1	HPDK-A6007
8	CHOKE SET	1	HPDK-A6008
9	C.V. SPRING	1	HPDK-A6009
10	AIR DISTRIBUTOR	1	HPDK-A6010
11	AIR DIS. O-RING	1	HPDK-A6011
12	CYLINDER	1	HPDK-A6012
14	PISTON	1	HPDK-A6014-Q
18	BIT RET. RING	1	HPDK-A6018-Q
19	BIT RET. RING O-RING	1	HPDK-A6019
20	BIT BEARING	1	HPDK-A6020-Q
21	SNAP RING	2	HPDK-A6021
22	DRIVE SUB	1	HPDK-A6022-Q

Drilling Parameters	
Working Pressure	150-350
Application Bit	5.87"-6.75"
Feed Force (lbs.)	1,300-4,500

Air Consumption at Different Working Pressures	
150 psi (scfm)	435
250 psi (scfm)	665
350 psi (scfm)	900

Dimensions & Weights	
TOP SUB : 3.5" API PIN	
Tool Length (in)	45.7
Outside Dia. (in)	5.59
Piston Diameter (in)	4.43
Stroke (in)	4.00
Weight w/o Bit (lbs)	198
Piston Weight (lbs)	41.6

Nothing contained in this brochure is intended to extend any warranty or representation for applications expressed or implied, regarding the products described herein. Any such warranties or other terms and conditions of sale of products shall be in accordance with Drill King's standard terms and conditions of sale for such products, which are available upon request.