



DK1000-N

DK1000-N HAMMER

- ✓ ***NUMA 100 SHANK DESIGN***
- ✓ ***NEW GENERATION***
- ✓ ***SUPERIOR TECHNOLOGY***
- ✓ ***STANDARD BIT DIAMETERS, 9.50"-14.00"***
- ✓ ***DELIVERS MORE ENERGY PER BLOW***
- ✓ ***HARDENED PISTON FOR EXTENDED LIFE***
- ✓ ***INNOVATIVE DESIGN FOR MAXIMUM PERFORMANCE WITH MINIMUM MAINTENANCE***

DRILL KING INTERNATIONAL

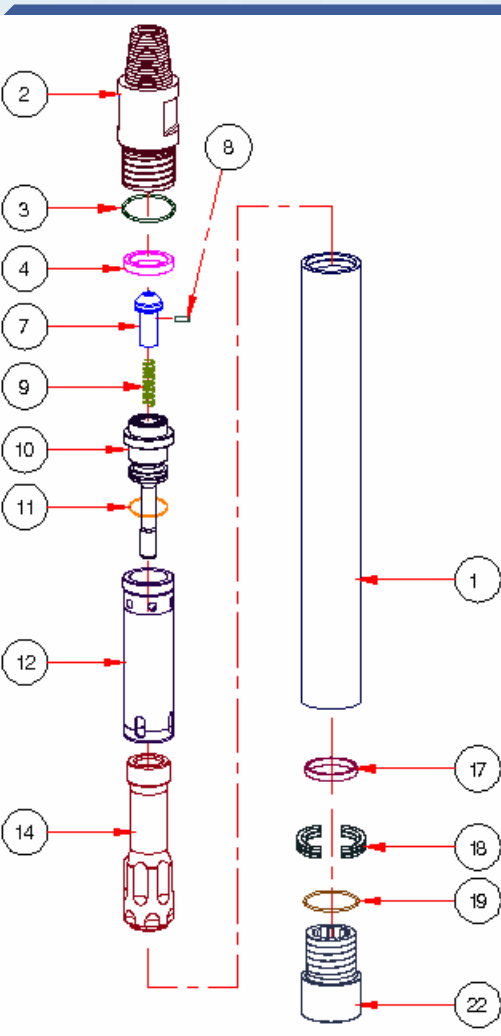
820 S. Sixth Avenue ♦ Mansfield, TX 76063 ♦ USA

Main#: 817-539-2500 ♦ Fax#: 682-222-1050

Sales#: 817-539-2501 ♦ Toll Free#: 866-900-2487

sales@drillking.net ♦ www.drillking.net

The newest generation of Drill King Hammers means faster penetration, longer life, and less down time due to down hole failures.



NO.	NOMENCLATURE	Qty	PART NUMBER
HAMMER ASSEMBLY (NUMA 10)			HADK-T1000-N
1	WEAR SLEEVE	1	HPDK-T10001-N
2	TOP SUB	1	HPDK-T10002-N
3	TOP SUB O-RING	1	HPDK-T10003-N
4	MAKE UP RING	1	HPDK-T10004-N
7	CHECK VALVE	1	HPDK-T10007-N
8	CHOKE SET	1	HPDK-T10008-N
9	C.V. SPRING	1	HPDK-T10009-N
10	AIR DISTRIBUTOR	1	HPDK-T10010-N
11	AIR DIS. O-RING	1	HPDK-T10011-N
12	CYLINDER	1	HPDK-T10012-N
14	PISTON	1	HPDK-T10014-N
17	PISTON RET. RING	1	HPDK-T10017-N
18	BIT RET. RING	1	HPDK-T10018-N
19	BIT RET. RING O-RING	1	HPDK-T10019-N
22	CHUCK	1	HPDK-T10022-N

Drilling Parameters

Working Pressure	150-250
Application Bit	9.50"-14.00"
Feed Force (lbs.)	3,500-7,000

Air Consumption at Different Working Pressures

150 psi (scfm)	690
200 psi (scfm)	980
250 psi (scfm)	1290

Dimensions & Weights

TOP SUB : 6.58" API PIN	
Tool Length (in)	62
Outside Dia. (in)	8.86
Piston Diameter (in)	6.85
Stroke (in)	3.90
Weight w/o Bit (lbs)	772
Piston Weight (lbs)	117